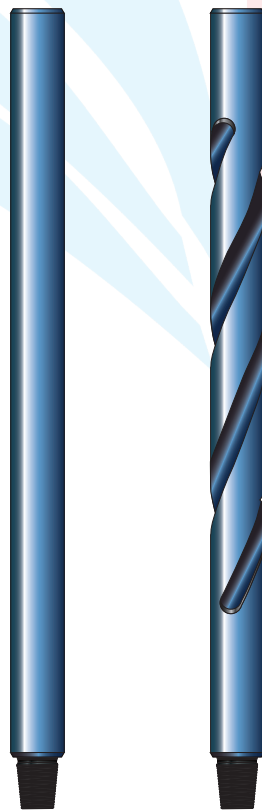
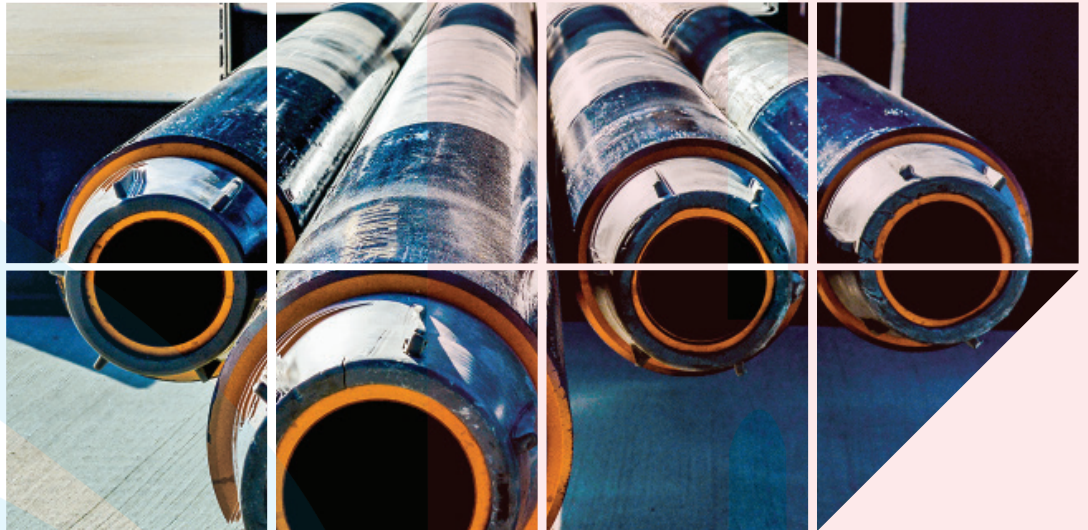


NON-MAGNETIC
SLICK
DRILL COLLAR

NON-MAGNETIC
SPIRAL
DRILL COLLAR



SLICK
DRILL COLLAR

SPIRAL
DRILL COLLAR

STILL DRILL COLLARS

Drill Collar Datasheet

Size:	4 3/4"
Material	AISI 4145H
SAP No	10246713
Type	Spiral

Dimensions & Features

Description	Units	Data
OD	in	4 3/4
	mm	120,65
ID of Pipe	in	2 1/4
	mm	57,15
Overall length	ft	31
	mm	9.449
Wall Thickness	in	1,250
	mm	31,75
Slip recess		Yes
Elevator recess		No
Drift Size	in	2,125
	mm	54,0
Grade	KSI	110

Operational Data

Description	Units	Data
Weight	lbs/ft	44,26
	kg/m	65,86
Displacement (open)	gal/ft	0,68
	l/m	8,445
Displacement (closed)	gal/ft	0,88
	l/m	10,929
Capacity	gal/ft	0,21
	l/m	2,608

Connections Data

Description	Units	Data
Connection Type		NC 38
Relief groove feature		Yes
API boreback feature		Yes
Make Up Torque MAX	ft-lb	11.000
	daNm	1.493
Make Up Torque Recommended	ft-lb	9.990
	daNm	1.355
Torsional Yield	ft-lb	17.600
	daNm	2.388
Tensile Yield	lbs	725.000
	daN	322.480
Section modulus	in ²	10
Bending Strength Ratio BSR		1,92

According to VAM Drilling Performance Data Sheet

Drill Collar Datasheet

Size:	6 3/4" / Range 2
Material	AISI 4137H
SAP No	10438075/10413451
Type	Spiral

Dimensions & Features

Description	Units	Data
OD	in	6 3/4
	mm	171,45
ID of Pipe	in	2 13/16
	mm	71,45
Overall length	ft	31
	mm	9.449
Wall Thickness	in	1,969
	mm	50,01
Slip recess		Yes
Elevator recess		No
Drift Size	in	2,688
	mm	68,3
Material Strength	PSI	110.000

Operational Data

Description	Units	Data
Weight	lbs/ft	95,58
	kg/m	142,23
Displacement (open)	gal/ft	1,46
	l/m	18,132
Displacement (closed)	gal/ft	1,78
	l/m	22,106
Capacity	gal/ft	0,32
	l/m	3,974

Connections Data

Description	Units	Data
Connection Type		NC 50
Relief groove feature		Yes
API boreback feature		Yes
Make Up Torque MAX	ft-lb	32.389
	daNm	4.395
Make Up Torque Recommended	ft-lb	29.445
	daNm	3.995
Torsional Yield	ft-lb	51.823
	daNm	7.032
Tensile Yield	lbs	1.259.311
	daN	560.142
Section modulus	in ³	29283
	m ³	47.986
Bending Strength Ratio BSR		2,62

Manufacture acco. NS1

According to DP Master Performance Data Sheet

Drill Collar Datasheet

Size:	8 1/4" / Range 2
Material	AISI 4137H
SAP No	10438074/10413449
Type	Spiral

Dimensions & Features

Description	Units	Data
OD	in	8 1/4
	mm	209,6
ID of Pipe	in	2 13/16
	mm	71,45
Overall length	ft	31
	mm	9.449
Wall Thickness	in	2,719
	mm	69,06
Slip recess		Yes
Elevator recess		No
Drift Size	in	2,688
	mm	68,3
Material Strength	PSI	100.000

Operational Data

Description	Units	Data
Weight	lbs/ft	149,45
	kg/m	222,40
Displacement (open)	gal/ft	2,28
	l/m	28,316
Displacement (closed)	gal/ft	2,61
	l/m	32,414
Capacity	gal/ft	0,32
	l/m	3,974

Connections Data

Description	Units	Data
Connection Type		6 5/8" REG
Relief groove feature		Yes
API boreback feature		Yes
Make Up Torque MAX	ft-lb	54.174
	daNm	7.351
Make Up Torque Recommended	ft-lb	49.249
	daNm	6.682
Torsional Yield	ft-lb	78.799
	daNm	10.692
Tensile Yield	lbs	1.683.401
	daN	748.777
Section modulus	in ³	54382
	m ³	89.116
Bending Strength Ratio BSR		3,211

Manufacture acc. NS1

According to DP Master Performance Data Sheet

Drill Collar Datasheet

Size:	9 1/2" / Range 2
Material	AISI 4137H
SAP No	10438058/10413443
Type	Spiral

Dimensions & Features

Description	Units	Data
OD	in	9 1/2
	mm	241,3
ID of Pipe	in	3
	mm	76,2
Overall length	ft	31
	mm	9.449
Wall Thickness	in	3 1/4
	mm	82,55
Slip recess		Yes
Elevator recess		No
Drift Size	in	2,875
	mm	73,0
Material Strength	PSI	100.000

Operational Data

Description	Units	Data
Weight	lbs/ft	187,47
	kg/m	278,97
Displacement (open)	gal/ft	2,86
	l/m	35,519
Displacement (closed)	gal/ft	3,23
	l/m	40,114
Capacity	gal/ft	0,37
	l/m	4,595

Connections Data

Description	Units	Data
Connection Type		7 5/8" REG
Relief groove feature		Yes
API boreback feature		Yes
Make Up Torque MAX	ft-lb	90.775
	daNm	12.317
Make Up Torque Recommended	ft-lb	82.523
	daNm	11.197
Torsional Yield	ft-lb	132.036
	daNm	17.915
Tensile Yield	lbs	2.459.066
	daN	1.093.793
Section modulus	in ³	83,336
	mm ³	1.365.625
Bending Strength Ratio BSR		3,061

Manufactured acc. NS1

According to DP Master Performance Data Sheet